

Ref. **3546**

COJINETE MANO BSP (GAS) INOX

Stainless BSP (Gas) Hand Die

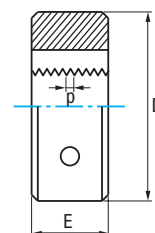
Filière à main BSP (Gaz) Inoxy



HSSE 5%Co	Gas (BSP)	DIN 24231	α 20°		Tol. A	Vaporizado Vaporized Vaporisée
--------------	--------------	--------------	-----------------	--	-----------	---

Chablán Entrada 2,25h
Chamfer 2,25 threads
Chanfrein 2,25 filets

Rosca británica para tubo paralelo (BSPP-GAS)
British Standard Parallel Pipe (BSPP-GAS)
Filetage britannique pour tuyau parallèle (BSPP-GAS)



Grupo Group-Groupe P	Grupo Group-Groupe M
-----------------------------------	-----------------------------------

G	Hilos Threads Filets	D mm	E mm	N° Art. 5% Co	€
G1/8	28	30	11	81341	46,59
G1/4	19	38	10	81342	46,59
G3/8	19	45	14	81343	63,28
G1/2	14	45	14	81344	63,28
G3/4	14	55	16	81345	124,33
G1"	11	65	18	81346	190,02



Ref. **3506**

COJINETE MANO BSP (GAS)

BSP (Gas) Hand Die

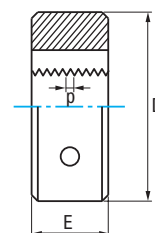
Filière à main BSP (Gaz)



HSS	Gas (BSP)	DIN 24231	α 10 - 17°		Tol. A
-----	--------------	--------------	----------------------	--	-----------

Chablán Entrada 1,75h
Chamfer 1,75 threads
Chanfrein 1,75 filets

Rosca británica para tubo paralelo (BSPP-GAS)
British Standard Parallel Pipe (BSPP-GAS)
Filetage britannique pour tuyau parallèle (BSPP-GAS)



G	Hilos Threads Filets	D mm	E mm	N° Art. HSS	€
G1/8	28	30	11	63461	42,35
G1/4	19	38	10	63455	42,35
G3/8	19	45	14	63467	54,78
G1/2	14	45	14	63452	54,78
G5/8	14	55	16	75496	83,59
G3/4	14	55	16	63464	113,53
G7/8	14	65	18	76252	118,84
G1"	11	65	18	63470	118,84
G1" 1/8	11	75	20	76202	217,67
G1" 1/4	11	75	20	76210	217,67
G1" 1/2	11	90	22	76224	217,67
New! G1" 3/4	11	105	22	76230	223,99
New! G2"	11	105	22	76236	269,57

