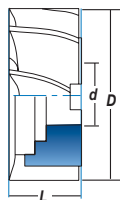
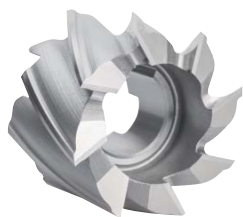


Ref. **4040**

FRESA FRONTAL AGUJERO HSSE 5% CO ACABADO

Finishing HSSE 5% Co Milling Cutter

Fraise à Trou HSSE 5% Co Finition



HSSE
5% Co

DIN
1880 N

ISO
2586



Tol. ϕ (js16)
d (H7)
L (K16)



D mm	L mm	d mm	Z	N° Art. 5% Co	€
40	32	16	8	55557	
50	36	22	8	55575	
63	40	27	8	55593	
80	45	27	10	55611	
100	50	32	10	55647	
125	56	40	14	55665	
*160	63	50	16	55674	

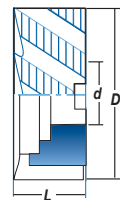
* $\phi > 125$ mm bajo demanda / upon request / sur demande

Ref. **4080**

FRESA FRONTAL AGUJERO HSSE 5% CO DESBASTE GRUESO

Coarse Roughing HSSE 5% Co Milling Cutter

Fraise à Trou HSSE 5% Co Ébauche



HSSE
5% Co

DIN
1880 NR

ISO
2586



Tol. ϕ (js16)
d (H7)
L (K16)



D mm	L mm	d mm	Z	N° Art. 5% Co	€
40	32	16	6	77752	
50	36	22	6	77754	
63	40	27	8	77755	
80	45	27	8	42863	
100	50	32	10	42866	
*125	56	40	12	42869	
*160	63	50	14	42872	

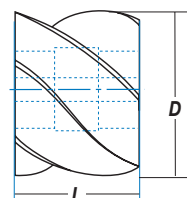
* $\phi > 100$ mm bajo demanda / upon request / sur demande

Ref. **4010**

FRESA FRONTAL 2 CORTES HSSE 5% CO PLANEAR

Plain HSSE 5% Co Shell End Mill

Fraise 2 Tailles HSSE 5% Co Surfacier



HSSE
5% Co

DIN
884 N

ISO
2584



Tol. ϕ (js16)
d (H7)
L (js16)



Fresa Planear
Plain Milling Cutter
Fraise Cylindrique à Surfacier

D mm	L mm	d mm	Z	N° Art. 5% Co	€
50	40	22	8	53952	
50	63	22	8	53961	
50	80	22	8	53970	
63	50	27	8	54015	
63	70	27	8	54024	
80	63	32	8	54096	
80	100	32	8	54123	
100	70	40	10	54141	